

**Date :** October 25, 2016

*SAMPLE IDENTIFICATION*

**Internal code :** 16J20-TOB7-1-DM

**Customer identification :** Eucalyptus - China

**Type :** Essential oil

**Source :** *Eucalyptus globulus*

**Customer :** TruIQ Global, LLC

*ANALYSIS*

**Method :** PC-PA-001-15E06, "Analysis of the composition of a liquid essential oil by GC-FID" (in French).

**Analyst :** Sylvain Mercier, M. Sc., chimiste

**Analysis date :** 2016-10-24

Checked and approved by :

---

Sylvain Mercier, M. Sc., chimiste 2014-005

*This report is digitally signed, it is only considered valid if the digital signature is intact.*

*IDENTIFIED COMPOUNDS*

Identification	Column: BP5			Column: WAX			Molecular Class
	R.T.	R.I.	%	%	R.I.	R.T.	
Hashishene	3.15	912	0.01	5.19	943	0.85*	Monoterpene
$\alpha$ -Thujene	3.25	918	0.02	[5.19]	943	0.85*	Monoterpene
$\alpha$ -Pinene	3.36	925	5.18	[5.19]	943	0.85*	Monoterpene
$\alpha$ -Fenchene	3.61	940	0.01	0.02	980	1.00	Monoterpene
Camphene	3.64	941	0.03	0.03	991	1.05	Monoterpene
Thuja-2,4(10)-diene	3.73	947	0.01	0.01	1048	1.44*	Monoterpene
Sabinene	4.07	968	tr	[0.01]	1048	1.44*	Monoterpene
$\beta$ -Pinene	4.13	971	0.45	0.42	1035	1.33	Monoterpene
Myrcene	4.41	988	0.64	0.72	1111	1.94*	Monoterpene
$\alpha$ -Phellandrene	4.68	1004	0.33	0.25	1104	1.88	Monoterpene
$\alpha$ -Terpinene	4.88	1015	0.08	[0.72]	1111	1.94*	Monoterpene
1,8-Cineole	5.26*	1036	91.56	88.28	1151	2.41*	Monoterp. ether
Limonene	5.26*	1036	[91.56]	[88.28]	1151	2.41*	Monoterpene
para-Cymene	5.26*	1036	[91.56]	2.86	1204	3.01	Monoterpene
<i>cis</i> - $\beta$ -Ocimene	5.30	1038	0.42	1.66	1184	2.78*	Monoterpene
<i>trans</i> - $\beta$ -Ocimene	5.47	1048	0.07	0.13	1197	2.94	Monoterpene
$\gamma$ -Terpinene	5.65	1058	0.95	[1.66]	1184	2.78*	Monoterpene
<i>cis</i> -Linalool oxide (fur.)	5.94	1073	0.01	0.01	1395	5.68	Monoterp. alcohol
Geranial	12.48	1273	0.03	0.02	1647	11.97	Monoterp. aldehyde
<b>Total identified</b>			<b>99.8%</b>	<b>99.6%</b>			

\*: Two or more compounds are coeluting on this column

[xx]: Duplicate percentage due to coelutions, not taken account in the identified total

Note: no correction factor was applied

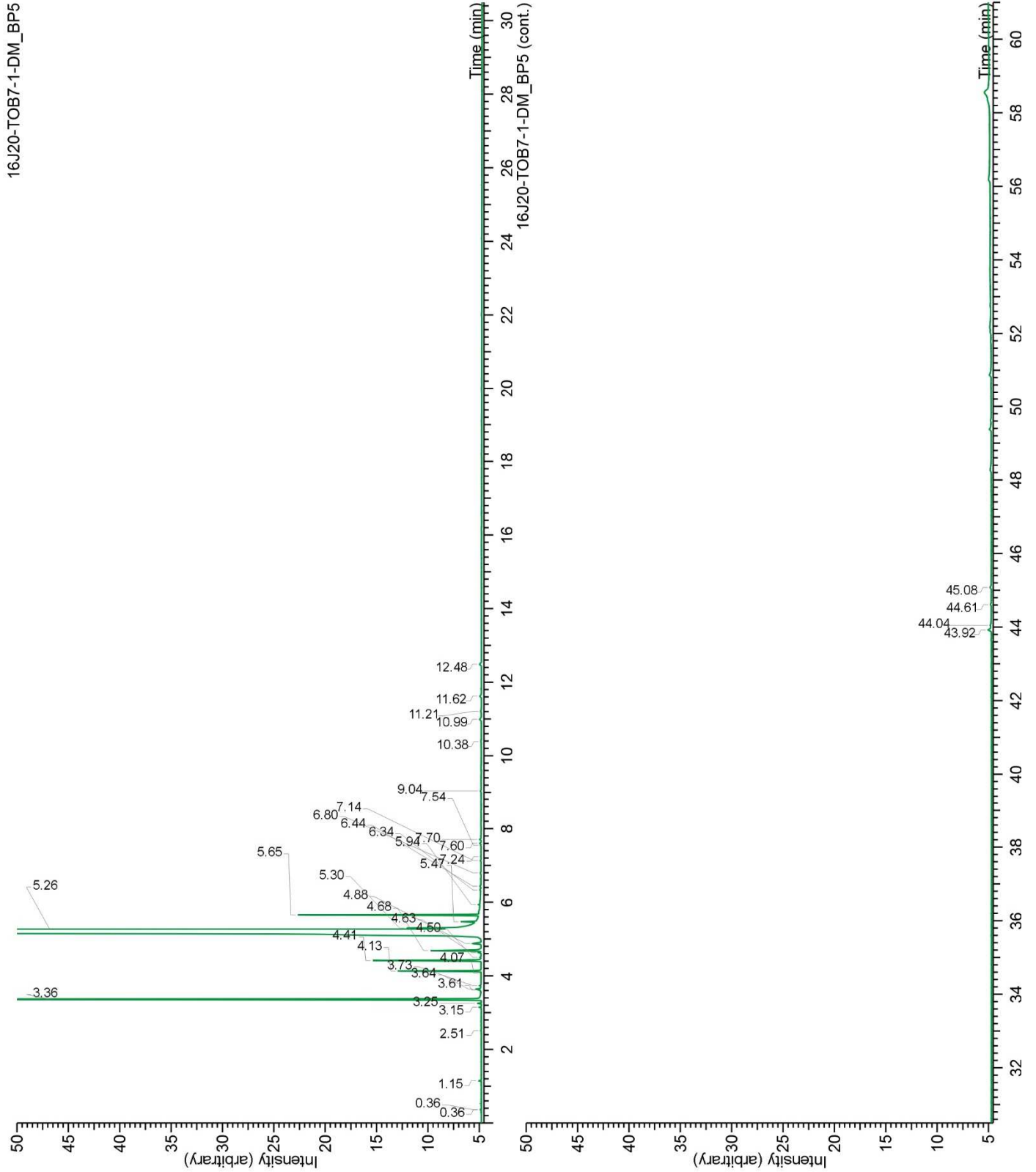
*OTHER DATA*

**Physical aspect** : Clear liquid

**Refractive index** : 1.4600  $\pm$  0.0003 (20 °C)

*CONCLUSION*

No adulterant, contaminant or diluent were detected using this method.



16J20-TOB7-1-DM\_WAX

